

NEW 2008

DURA PLUS



UNIVERSAL TOWEL DISPENSER

Standard metal roll towel and single fold dispenser with cutting bar.

DP101 White enamel (10^{1/2}" x 6^{3/4}" x 9^{1/2}")
 DP101-1 White enamel / key (10^{1/2}" x 6^{3/4}" x 9^{1/2}")

NEW 2008

DURA PLUS

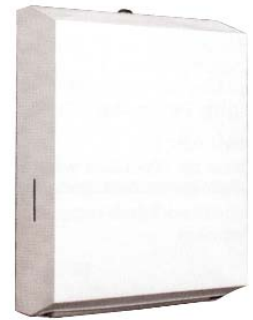


UNIVERSAL TOWEL DISPENSER

Standard metal roll towel and single fold dispenser with cutting bar.

DP103 Stainless steel (10^{1/2}" x 6^{3/4}" x 9^{1/2}")

NEW 2008



MULTIFOLD TOWEL DISPENSER

Metal locking dispenser with front fill easy access door. (10^{1/2}" x 10^{1/2}" x 4^{3/4}")

HGTD-2W White enamel
 HGTD-2S Stainless steel



SAN JAMAR
 Smart • Safe • Sanitary



INTEGRA™ TOWEL DISPENSER

Compact dispenser with integrated dispensing device. For rolls up to 8^{1/2}" in diameter.

SJ850 Dispenser (15^{1/2}" x 13" x 9")
 Colors : Blue or black

SAN JAMAR
 Smart • Safe • Sanitary



LEVER ROLL TOWEL DISPENSER

Lever handle treated with Bio-Pruf® to inhibit bacteria growth. For rolls up to 8^{1/2}" in diameter.

SJ1100 Dispenser (15^{1/2}" x 13" x 9^{5/8}")
 Colors : Blue or black

NEW 2008

SAN JAMAR
 Smart • Safe • Sanitary



SIMPLICITY HANDS FREE DISPENSER

Offers hands free dispensing of most types of roll towel. Does not require batteries. Fast paper delivery, automatic mechanical cutting dispenses consistent 11" portions of roll towel.

SJ7000 Dispenser (16^{1/8}" x 11^{15/16}" x 9^{1/2}")
 Colors : Blue or black

NEW 2008

SAN JAMAR
 Smart • Safe • Sanitary



TEAR-N-DRY ECO

Universal electronic touchless dispenser. Optimized design, compact, simple and long battery life. 8" wide roll towel, 8" diameter capacity.

SJ8000 Dispenser
 Colors : Blue or black

SAN JAMAR
 Smart • Safe • Sanitary



CENTER PULL TOWEL DISPENSER

Large capacity plastic dispenser. Hygienic, without levers or cranks.

SJ400 Dispenser (11^{5/8}" x 9^{1/8}" x 9^{1/2}")
 Colors : Black

SAN JAMAR
 Smart • Safe • Sanitary



MULTIFOLD TOWEL DISPENSER

Touchless dispenser with 50% more capacity than standard folded towel dispensers. Made of resistant plastic.

SJ1700 Dispenser (18" x 11^{3/4}" x 6^{1/4}")
 Colors : Black



NEW 2008



CONTINENTAL

CHROMED DISPENSERS

Chromed steel dispenser with hidden locking mechanism. Simply pinch the empty core to change the roll.

KART22 Single 2^{3/4}"x6"x4^{1/4}"
KART23 Double 2^{3/4}"x11"x4^{1/4}"

NEW 2008



DOUBLE ROLL VERTICAL DISPENSER

White enamel, double vertical tissue dispenser. Access to second roll granted only when the first roll is empty.

HGTTD-5W (6"x 12"x 6^{1/2}"")

NEW 2008



DOUBLE ROLL VERTICAL DISPENSER

Stainless steel, double vertical tissue dispenser. Access to second roll granted only when the first roll is empty.

HGTTD-5S (6"x 12"x 6^{1/2}"")

SAN JAMAR
Smart • Safe • Sanitary



DOUBLE ROLL VERTICAL DISPENSER

Black plastic, double vertical tissue dispenser. Access to second roll granted only when the first roll is empty.

SJ3500 (12^{3/4}"x 7^{1/2}"x 7")
Color : Black

SAN JAMAR
Smart • Safe • Sanitary



VERSATWIN® DOUBLE ROLL DISPENSER

Translucent dispenser with lock. Classic design for standard bath tissue. For rolls with up to 1500 sheets.

SJ3600 (8^{1/4}"x 12^{1/4}"x 5^{3/4}"") core 3^{1/4}"
Colors : Black

SAN JAMAR
Smart • Safe • Sanitary



SINGLE ROLL DISPENSER

Translucent dispenser with lock. Universal, fits any brand of jumbo paper.

SJ6000 (14^{9/10}"x 12^{9/10}"x 5^{4/5}"") core 3^{1/4}"
for 12" rolls
Colors : Black

SAN JAMAR
Smart • Safe • Sanitary



SINGLE ROLL DISPENSER

Translucent dispenser with lock. Universal, fits any brand of mini-jumbo paper.

SJ2000 (12"x 10^{5/8}"x 5^{3/4}"") core 3^{1/4}"
for 9" rolls
Colors : Blue or black

SAN JAMAR
Smart • Safe • Sanitary



MINI-JUMBO DOUBLE ROLL DISPENSER

Translucent dispenser with lock. Classic design for 2 mini-jumbo rolls.

SJ4000 (12"x 19"x 5^{1/4}"") for 9" rolls, core 3^{1/4}"
Colors : Blue or black



PUSH BUTTON DISPENSERS

Translucent 30 oz. capacity soap dispenser for liquid and lotion soap.

- FR8-BLE 30 oz. Blue
- FR8-BLK 30 oz. Black
- FR8-WHT 30 oz. White/clear



PUSH BUTTON DISPENSERS

Translucent 48 oz. capacity soap dispenser for liquid and lotion soap. Easily, removable container for quick maintenance.

- F1215-WHT 48 oz. White
- F1215-BLK 48 oz. Black



PUSH BUTTON DISPENSERS

Stainless steel soap dispenser for liquid & lotion soap. Heavy-duty, vandalism resistant.

- HG58AP 40 oz. vertical (8³/₁₆" x 4¹³/₁₆" x 2¹¹/₁₆")
- HG16AP 40 oz. horizontal (4¹³/₁₆" x 8³/₁₆" x 2¹¹/₁₆")



INGO-MAN® UNIVERSAL DISPENSER

Dispenser for all types of soap, grit as well. Stainless steel case with lockable plastic cover.

- FTV23 1000ml. container



INGO-MAN® UNIVERSAL DISPENSER

Dispenser for all types of soap, grit as well. Stainless steel case with lockable aluminium cover.

- FZCV23 2500ml. container



COUNTER TOP DISPENSER

Top fill dispenser for liquid and lotion soap. Stainless steel head and ABS interior parts.

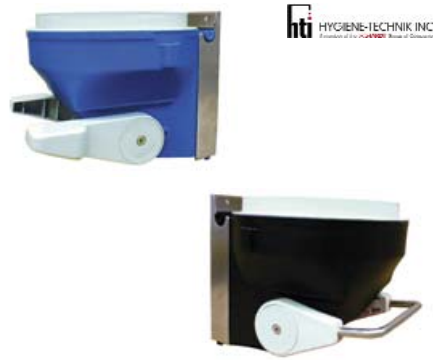
- HG64LB 1 Liter



GALLON PUMP

Heavy-duty 38 mm. pump with 1 oz. output. Stainless steel spring. Very effective for dispensing oils and solvents.

- KA9 Pump for 4 L. container 16¹/₈"
- KA9HL Pump for 20 L. container 19³/₄"
- KA9BC Adaptor for 20 L. container 38mm



WATERLESS HAND SOAP DISPENSER

Dispenser for waterless hand soap with silica, plastic beads or pumice.

- FASC-SC 2 plastic levers
- FASC-SC105 1 steel bar



GLOBAL CLEAN^{MC}

All Global Clean™ soap refills feature ready-to-use, hermetically sealed pouches with a built-in drip-proof valve. Refills are easy-loading, leak-free and clog-free.

- HG80001 White dispenser
- HG80801 Pink soap 12x800 ml.
- HG80810 Sanitizing gel 12x800 ml.

NEW 2008



SANITARY NAPKIN RECEPTACLES

Resistant receptacle for disposal of sanitary napkins and tampons.

- HGND-1W (8" x 4 1/2" x 13 1/4") White metal enamel
- HGND-1S (8" x 4 1/2" x 13 1/4") Stainless steel
- HG250 White ABS plastic receptacle
- HG500SC Waxed bags (7 1/2" x 3 1/2" x 9 3/4")
Case of 500



Procter & Gamble
PROFESSIONAL LINE



SANITARY TAMPONS AND NAPKINS

TAMPAX® tampons and MAXITHINS® #4 napkins for dispensers.

- HGT-4 cs 250 MAXITHINS® #4 napkins
- HG200T cs 200 TAMPAX® tampons
- PG500T cs 500 TAMPAX® tampons
- PG20831 cs 48x10 TAMPAX® tampons

NEW 2008



TAMPON DISPENSERS

White enamel dispensers for controlled dispensing of sanitary napkins and tampons. Available with 50¢ or \$1.00 mechanisms.

- HGT45-50 42 tampons (50¢)
- HGT45-1 42 tampons (\$1.00)

NEW 2008



NAPKIN AND TAMPON DISPENSERS

White enamel dispensers for controlled dispensing of sanitary napkins and tampons. Available with 50¢ or \$1.00 mechanisms.

- HGMT-50 15 napkins / 22 tampons (50¢)
- HGMT-1 15 napkins / 22 tampons (\$1.00)



NAPKIN AND TAMPON DISPENSER

White enamel dispensers for controlled dispensing of sanitary napkins and tampons. When stock is low, a bright red light flashes EMPTY, alerting maintenance personnel that it is time to restock the vendor.

- HGED1-1 White enamel dispenser

WASHROOMS

BOWL BRUSHES



CONTINENTAL

KA509

KA780

KA510

ACRYLIC BOWL SWABS

Acid resistant acrylic swab for cleaning toilet bowls and urinals.

- KA509 Bowl swab with wringer
- KA510 Regular bowl swab
- KA780 Holder for brushes and bottles

NEW 2008



atlas graham

BOWL BRUSH AND CADDY

Unique round construction allows you to reach into all areas of the bowl.

- AG823 Round bowl brush
- AG816 Bowl brush caddy
- AG25 Turk head bowl brush

NEW 2008



atlas graham

TOILET BOWL BRUSH

Unique construction allows you to reach into all areas of the bowl.

- AG824 Polypropylene brush
- AG924 Natural tampico bowl brush
- AGB1659 Drain brush

NEW 2008



Rubbermaid
Commercial Products

BABY CHANGING STATION VERTICAL

Vertical baby changing stations meet all global safety standards (ASTM, ADA, FDA, and EN). Antimicrobial protection. Easy reach hooks. Built-in shelf and liner storage.

RU7819 Baby changing table 34"x 23"x 4" closed
RU7817 Case of 320 bed liners, 4^{3/4}"x6^{1/2}" folded

Rubbermaid
Commercial Products



BABY CHANGING STATION HORIZONTAL

Practical & safe with its deep and wide bed, leaving room to work. Hooks on both sides enabling you to hang a diaper bag therefore freeing your hands. Complete plastic construction for easy cleaning. Disposable cloth dispenser at eye level.

RU7818 Baby changing table 33"x 21"x 4" closed
RU7817 Case of 320 bed liners, 4^{3/4}"x6^{1/2}" folded

NEW 2008



CONTINENTAL

**A.D.A. compliant when properly installed
DIAPER CHANGING STATION**

The concave shelf design provides a deep area for the child to lay, preventing them from rolling around. Heavy-duty safety straps provide an additional level of child security. Safety belt with cam-buckle is adjustable with one hand for safety and convenience, belt is non-absorbant. ASTM, ADA, easy to read ANSI compliant labels. Built-in shelf and liner storage.

KA8252-V Diaper changing station 34"x19"x4"
KA8255 Case of 500 bed liners, 4^{3/4}"x6^{1/2}" folded

NEW 2008



CONTINENTAL

**A.D.A. compliant when properly installed
DIAPER CHANGING STATION**

The concave shelf design provides a deep area for the child to lay, preventing them from rolling around. Heavy-duty safety straps provide an additional level of child security. Safety belt with cam-buckle is adjustable with one hand for safety and convenience, belt is non-absorbant. ASTM, ADA, easy to read ANSI compliant labels. Built-in shelf and liner storage.

KA8252-H Diaper changing station 34"x18"x4"
KA8255 Case of 500 bed liners, 4^{3/4}"x6^{1/2}" folded

ACCESSORIES

WASHROOMS

NEW 2008



HAND DRYERS

Touch free sensor is activated when hands are placed within the set range under spout. Approximately 20 seconds drying time. Sound level : 61 to 67 dB.

HS1-P ABS Plastic finish 120 V. 11 amps

NEW 2008



HAND DRYERS

Touch free sensor is activated when hands are placed within the set range under spout. Approximately 20 seconds drying time. Sound level : 61 to 67 dB.

HS1-M Metal finish 120 V. 11 amps

Rubbermaid
Commercial Products



BATH MATS

White rubber mat for use in bath tubs. Surface is slip resistant & backing is pressure adherent.

RU7035-04 (14" x 22^{1/2}")
RU7041-04 (16" x 28")